

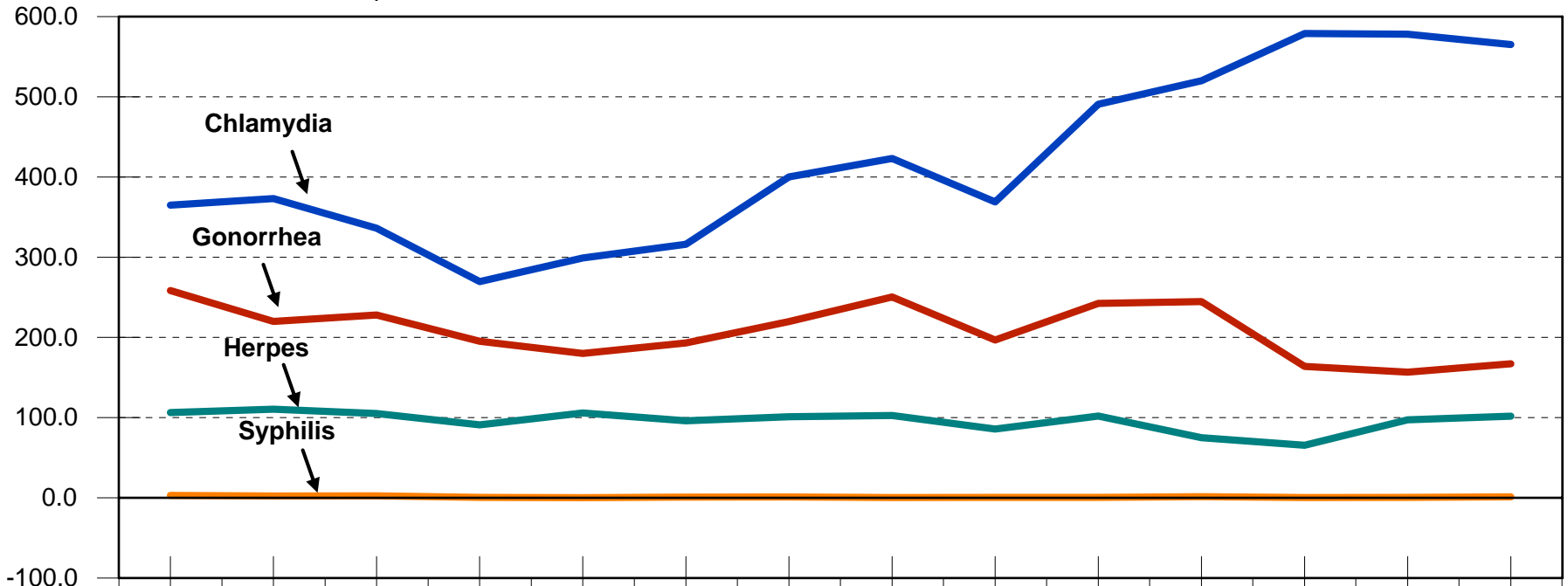


# STDs in Douglas County

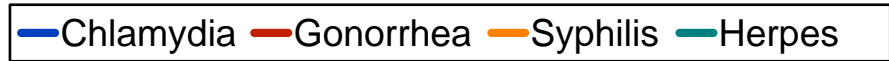
Douglas County Health Department

# Sexually Transmitted Diseases Douglas County, NE 1993-2006

Cases Per 100,000 Population



	1993	1994	1995	1996	1997	1998	1999	2000	2001	2002	2003	2004	2005	2006
Chlamydia	365.0	373.2	336.3	269.7	299.1	316.1	400.2	423.2	369.0	490.8	520.1	578.9	578.1	565.2
Gonorrhea	258.5	220.1	228.0	195.2	180.0	193.1	219.8	250.4	196.9	242.5	244.8	164.0	156.7	167.1
Syphilis	3.0	2.3	2.5	0.7	0.2	0.9	1.1	0.4	0.6	0.6	1.5	0.4	0.6	1.2
Herpes	106.3	110.5	105.1	91.1	105.9	96.1	101.0	102.7	85.8	102.0	74.9	65.6	97.2	101.8



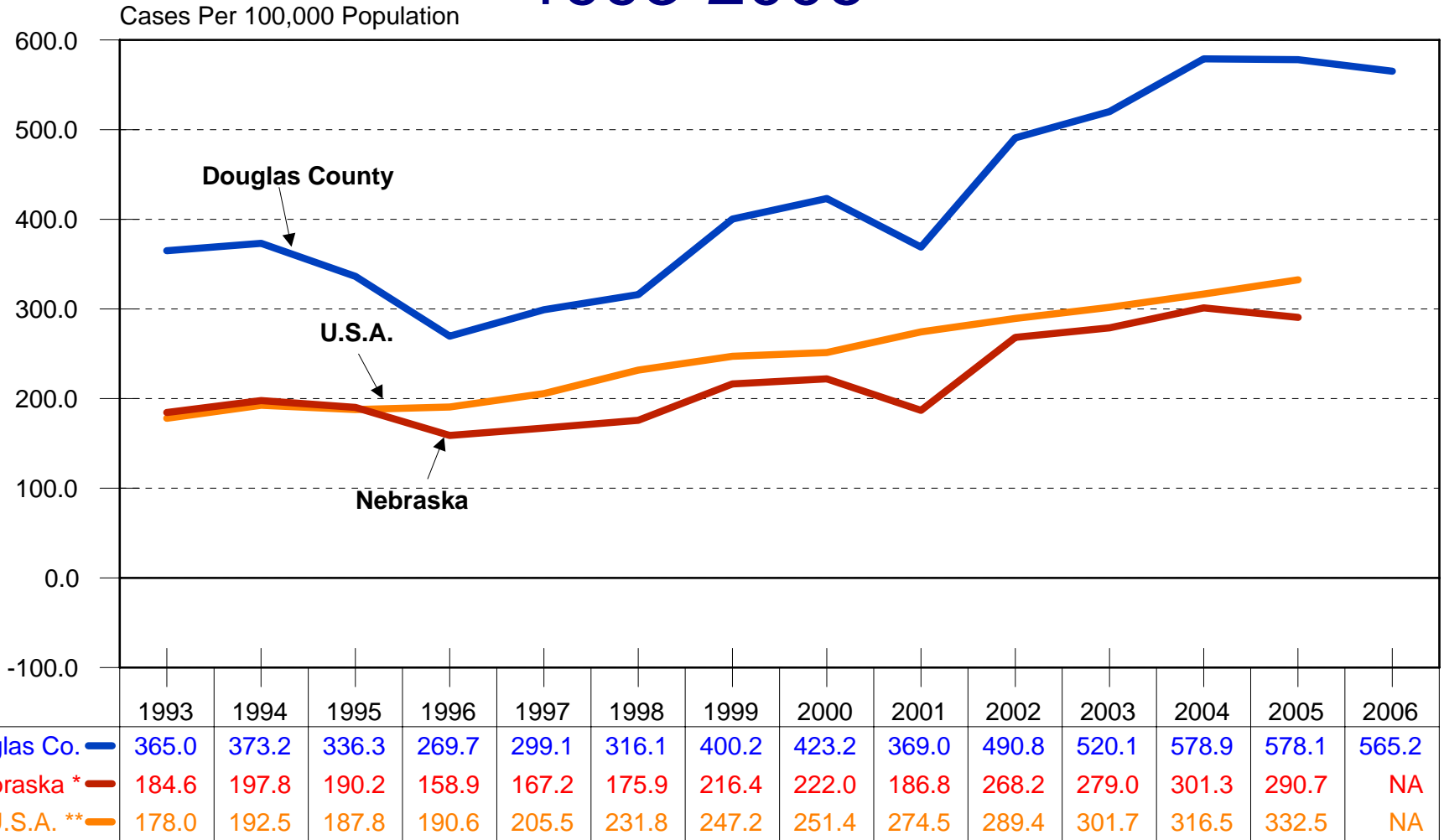
Based on Date of Report

Douglas County Health Department 05/08/2007



# Chlamydia Rates

## Douglas County, Nebraska, and U.S.A. 1993-2006



\* Source: NHHSS STD Program 2006.

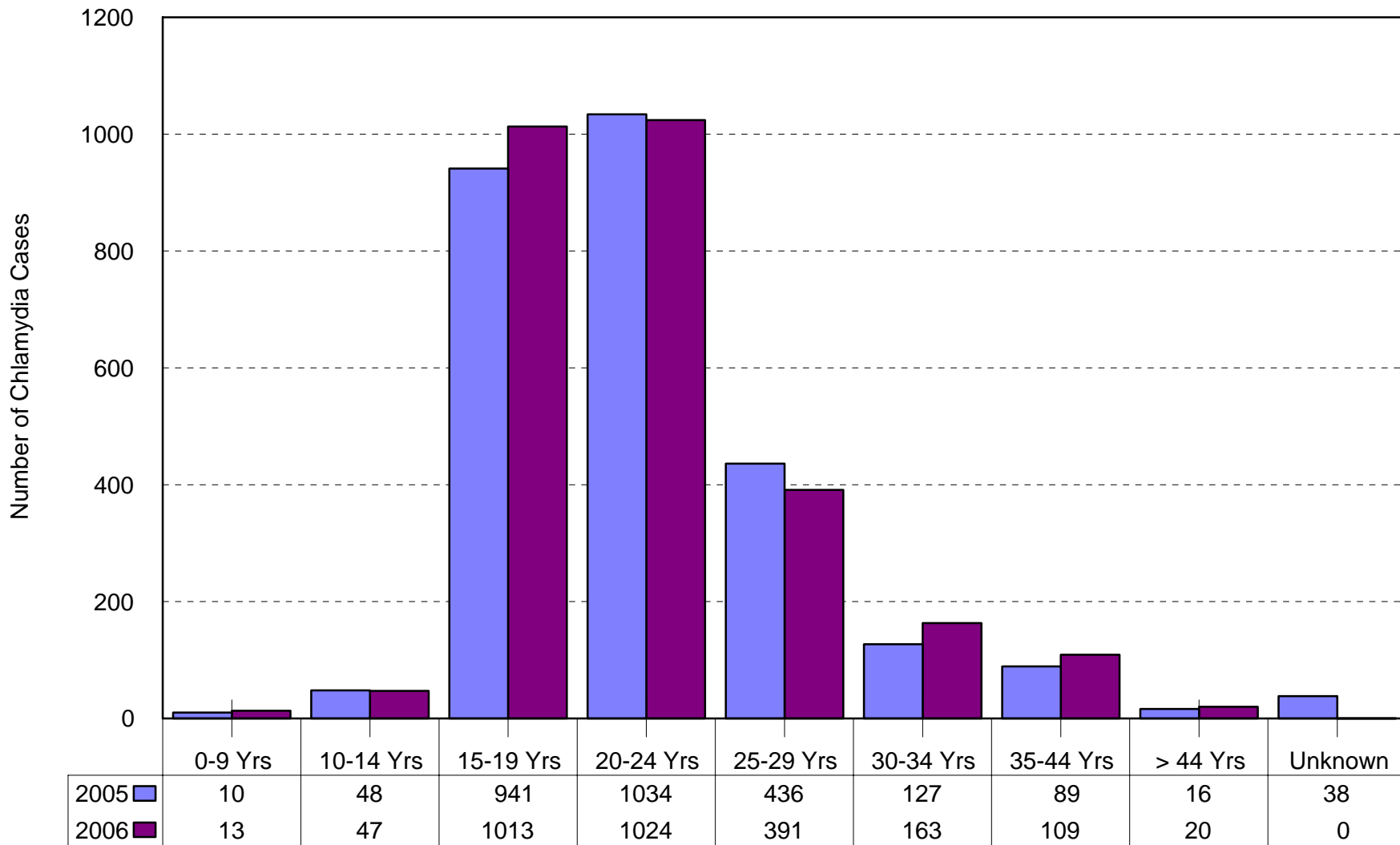
\*\* Source: CDC STD Surveillance 2005.

Based on Date of Report

Douglas County Health Department 05/08/2007



# Number of Chlamydia Cases by Age Group Douglas County, NE 2005-2006



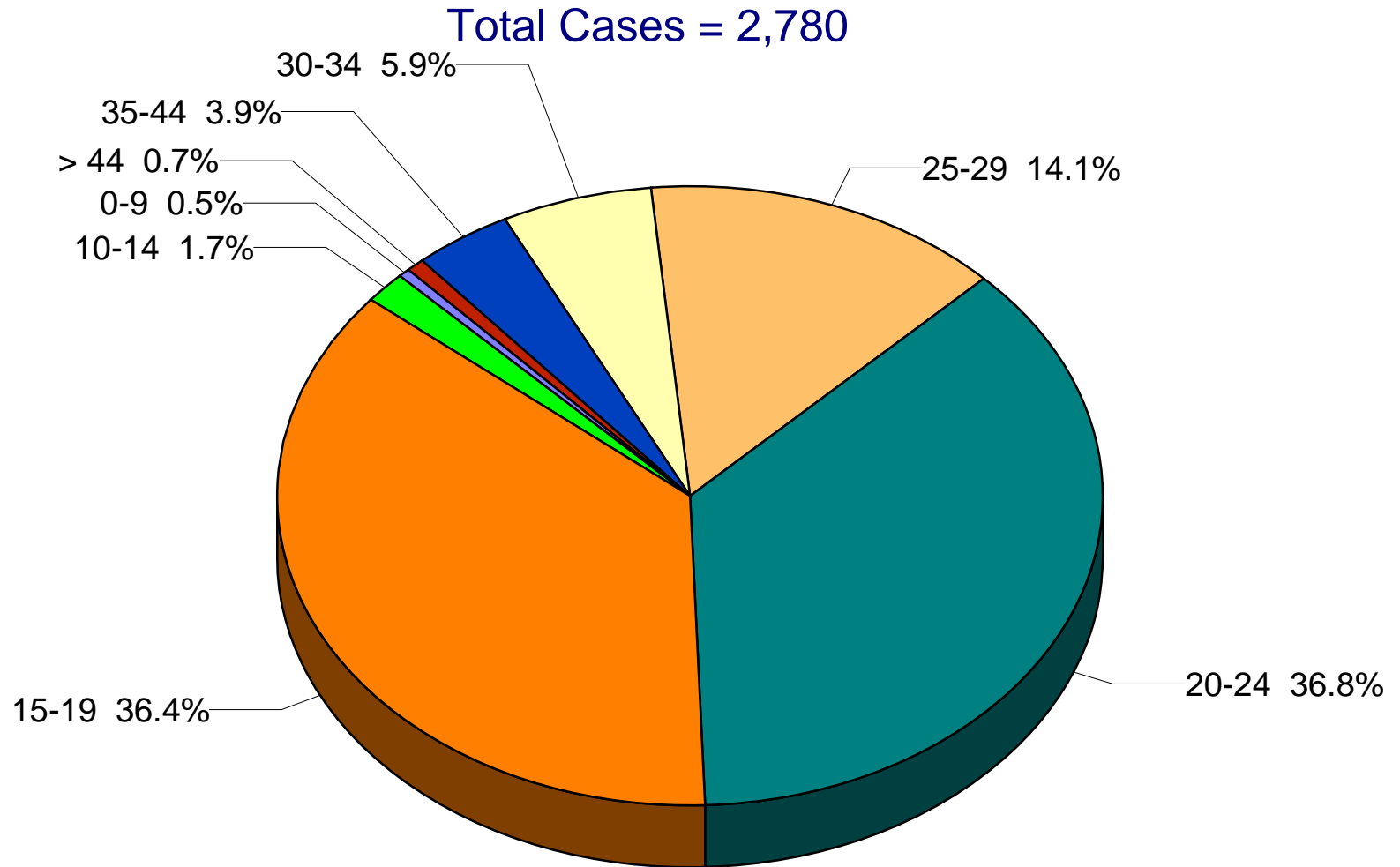
Based on Date of Diagnosis

Douglas County Health Department 05/08/2007



# Chlamydia Cases By Age Group

## Douglas County, Nebraska 2006

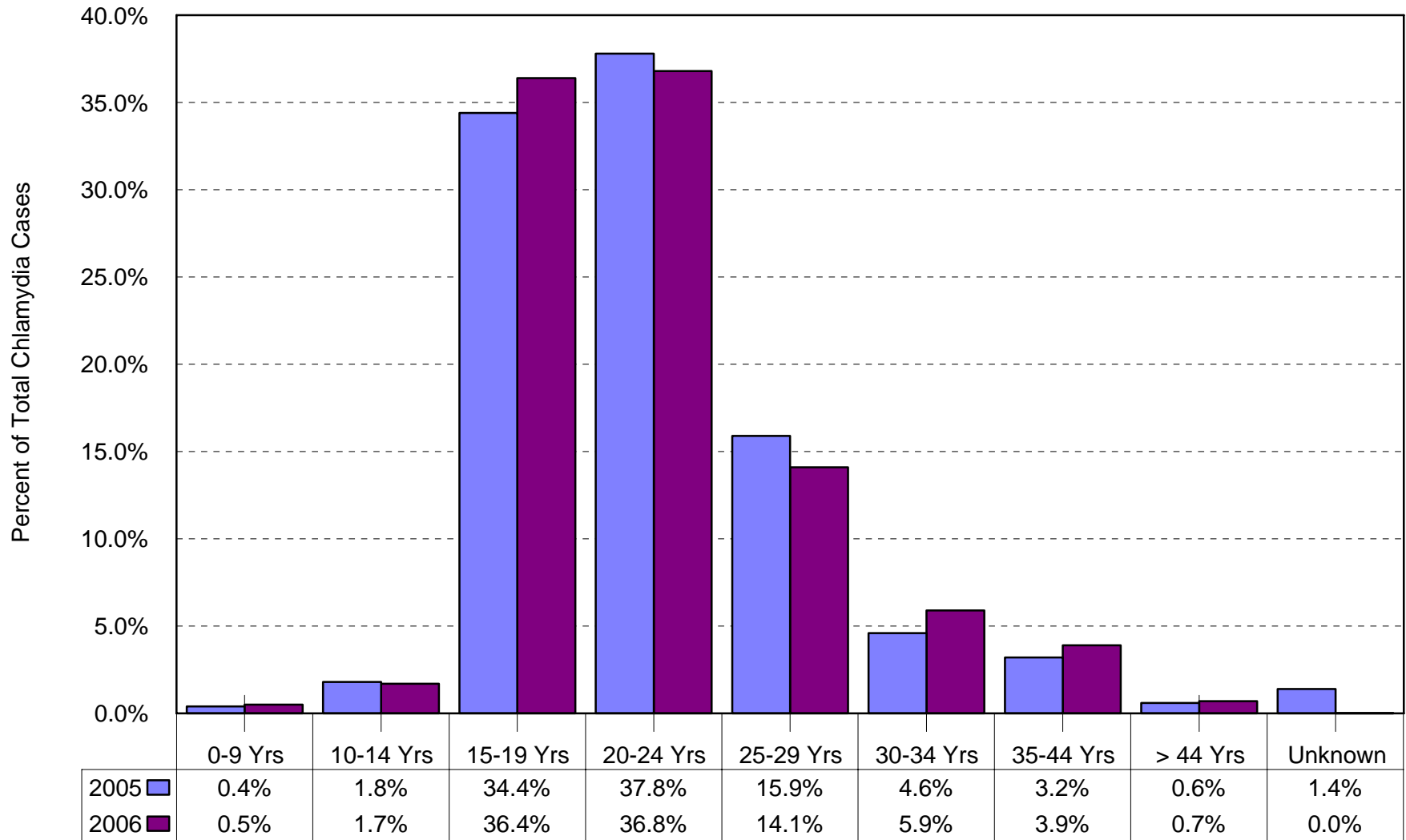


Based on Date of Diagnosis

Douglas County Health Department 05/08/2006



# Percentage of Chlamydia Cases by Age Group Douglas County, NE 2005-2006

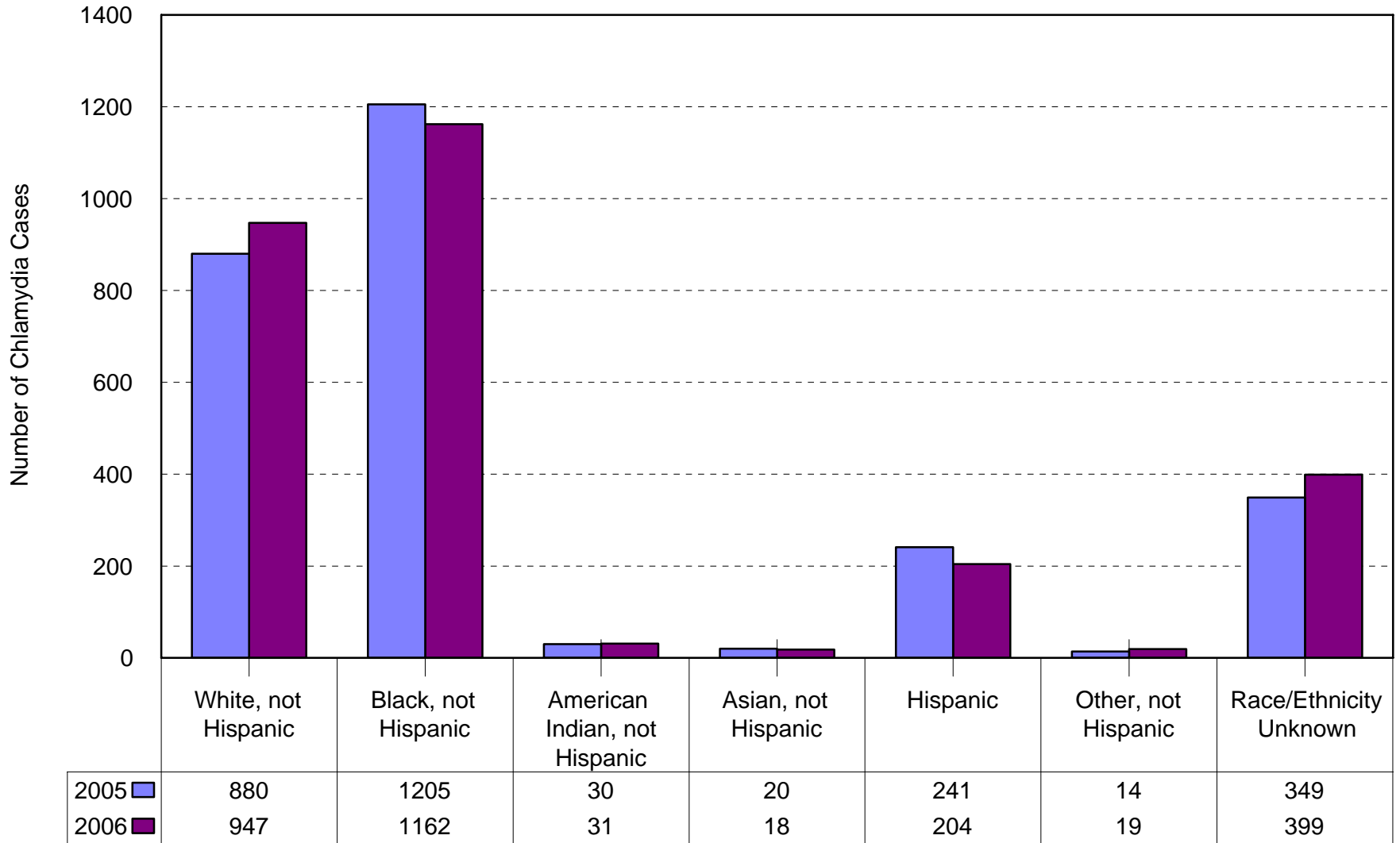


Based on Date of Diagnosis

Douglas County Health Department 05/08/2007



# Number of Chlamydia Cases by Race/Ethnicity Douglas County, NE 2005-2006



Based on Date of Diagnosis

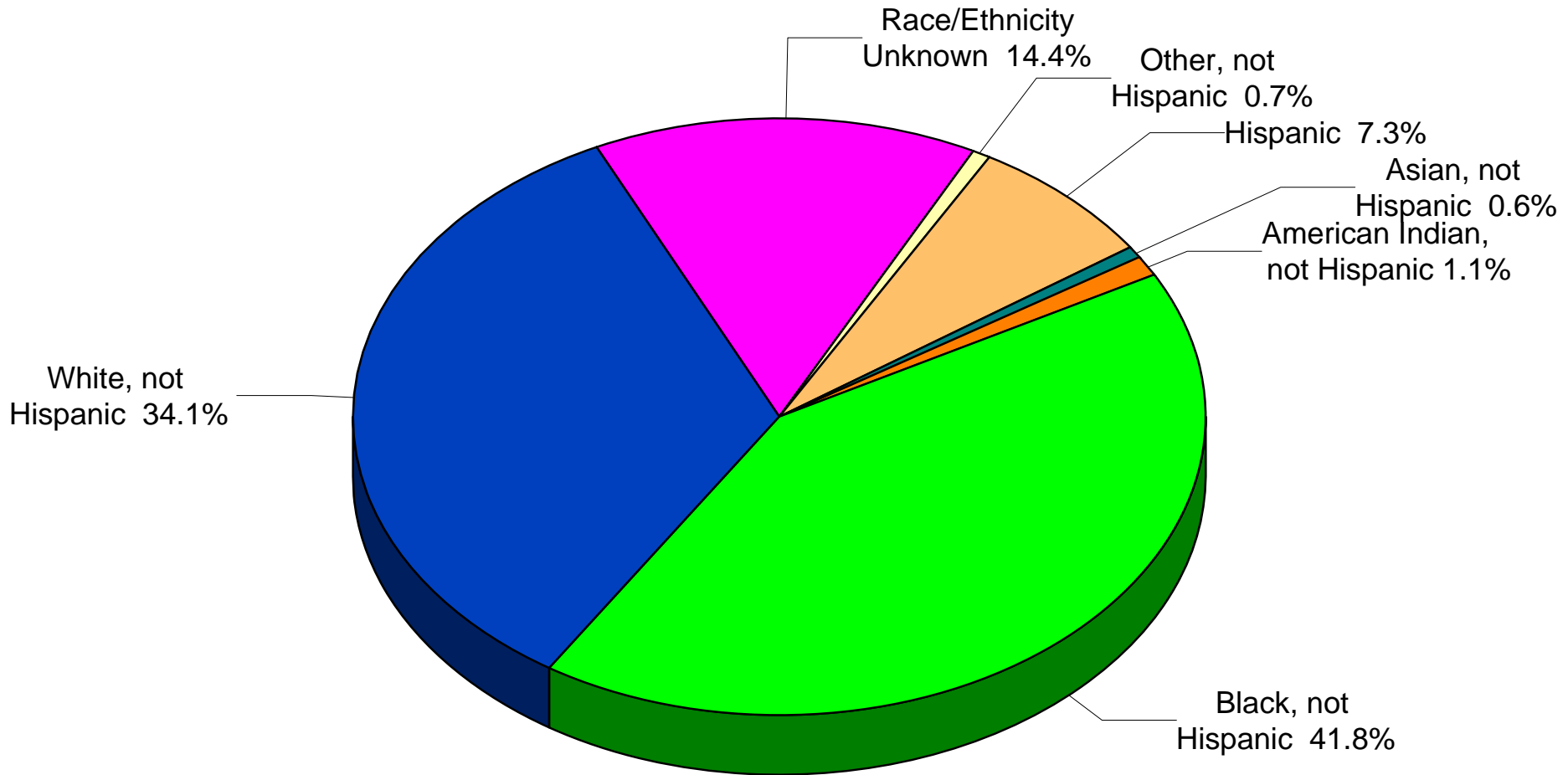
Douglas County Health Department 05/08/2007



# Chlamydia Cases By Race/Ethnicity

## Douglas County, Nebraska 2006

Total Cases = 2,780

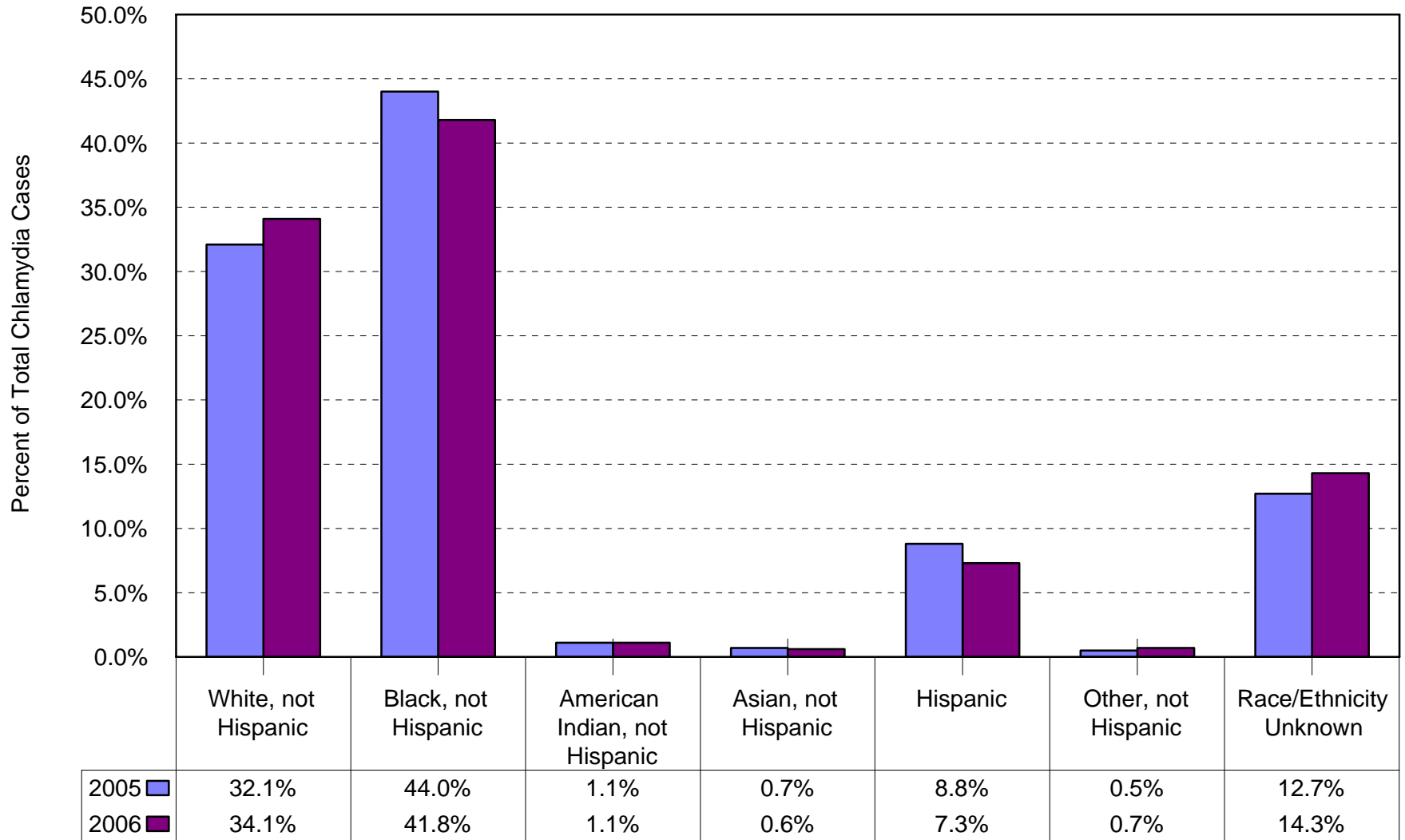


Based on Date of Diagnosis

Douglas County Health Department 05/08/2007



# Percentage of Chlamydia Cases by Race/Ethnicity Douglas County, NE 2005-2006



Based on Date of Diagnosis

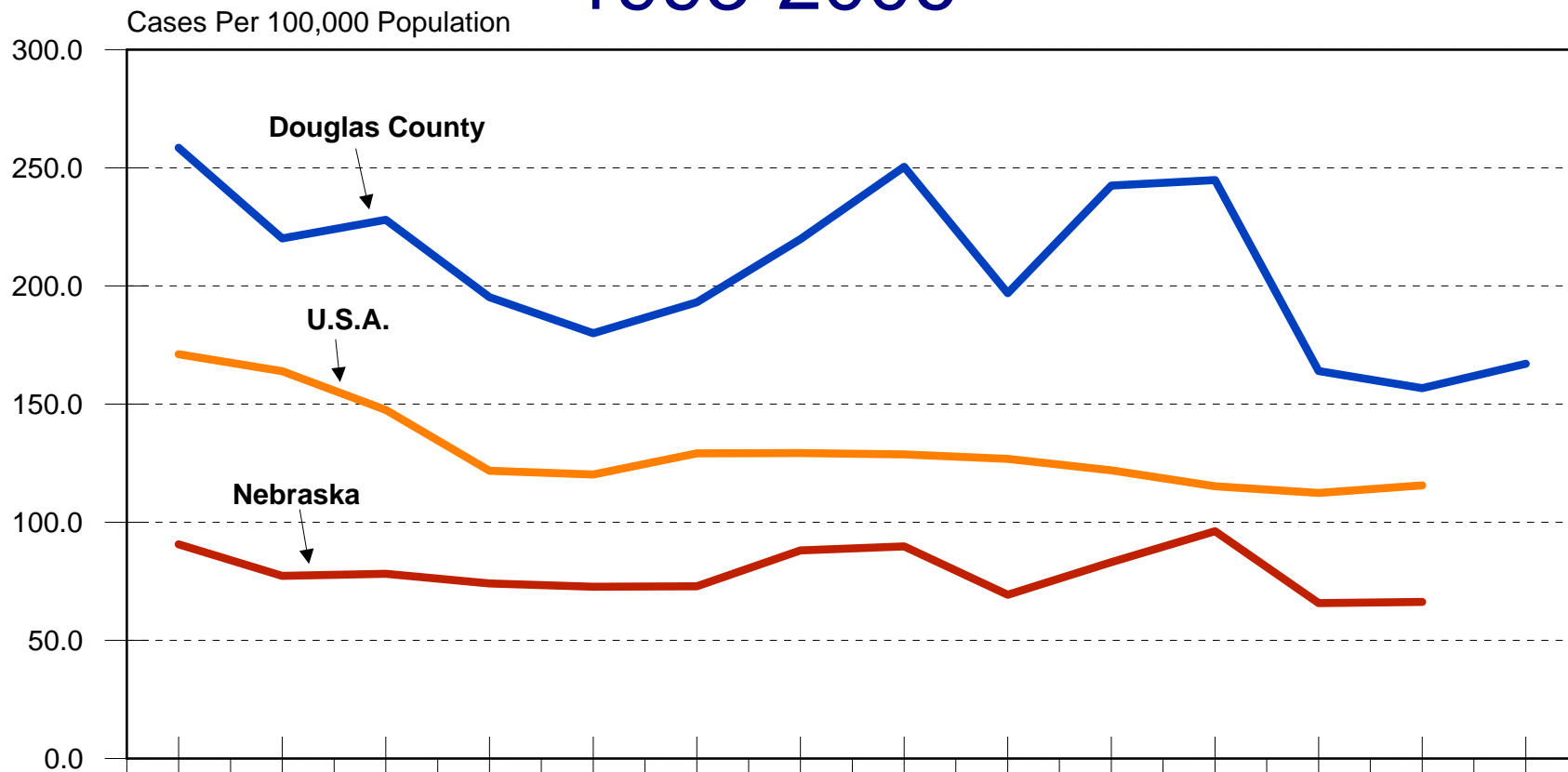
Douglas County Health Department 05/08/2007



# Gonorrhea Rates

## Douglas County, Nebraska, and U.S.A.

### 1993-2006



	1993	1994	1995	1996	1997	1998	1999	2000	2001	2002	2003	2004	2005	2006
Douglas Co. —	258.5	220.1	228.0	195.2	180.0	193.1	219.8	250.4	196.9	242.5	244.8	164.0	156.7	167.1
Nebraska *	90.7	77.3	78.2	74.1	72.7	72.9	88.1	89.8	69.3	83.1	96.2	65.8	66.3	NA
U.S.A. **	171.1	163.9	147.5	121.8	120.2	129.2	129.3	128.7	126.8	122.0	115.2	112.4	115.6	NA

\* Source: NHHSS STD Program 2006.

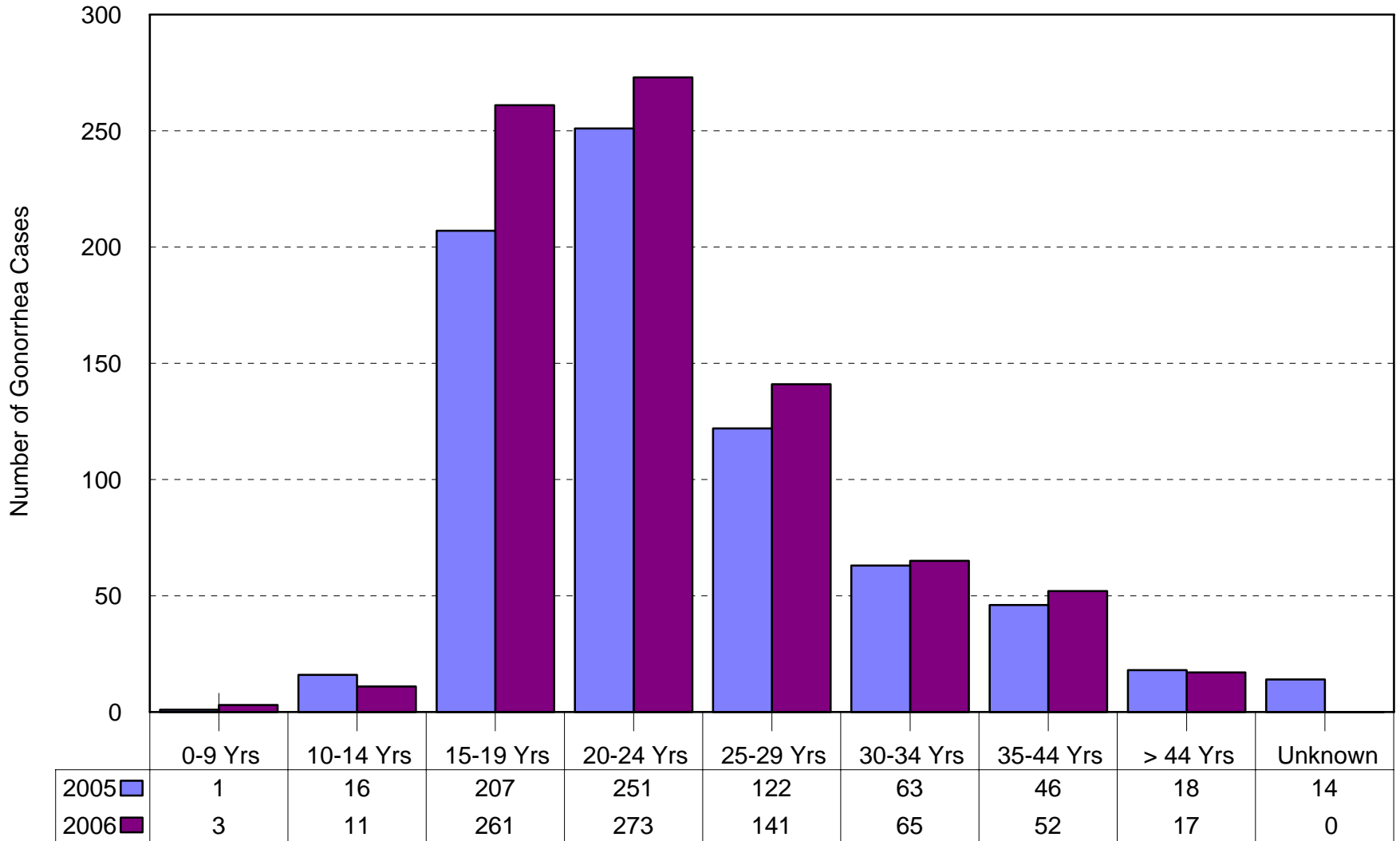
\*\* Source: CDC STD Surveillance 2005.

Based on Date of Report

Douglas County Health Department 05/08/2006



# Number of Gonorrhea Cases by Age Group Douglas County, NE 2005-2006



Based on Date of Diagnosis

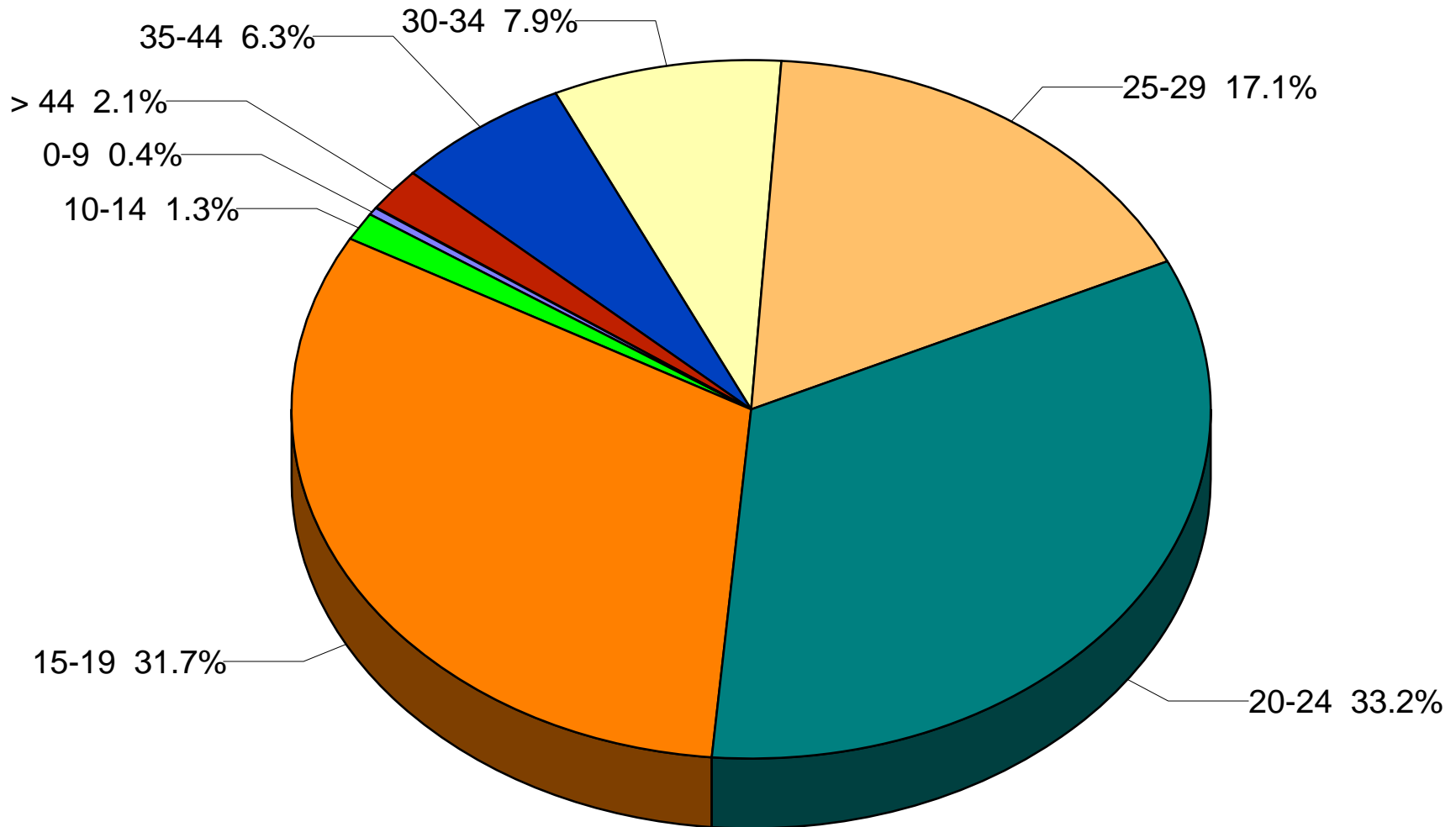
Douglas County Health Department 05/08/2007



# Gonorrhea Cases By Age Group

## Douglas County, Nebraska 2006

Total Cases = 823

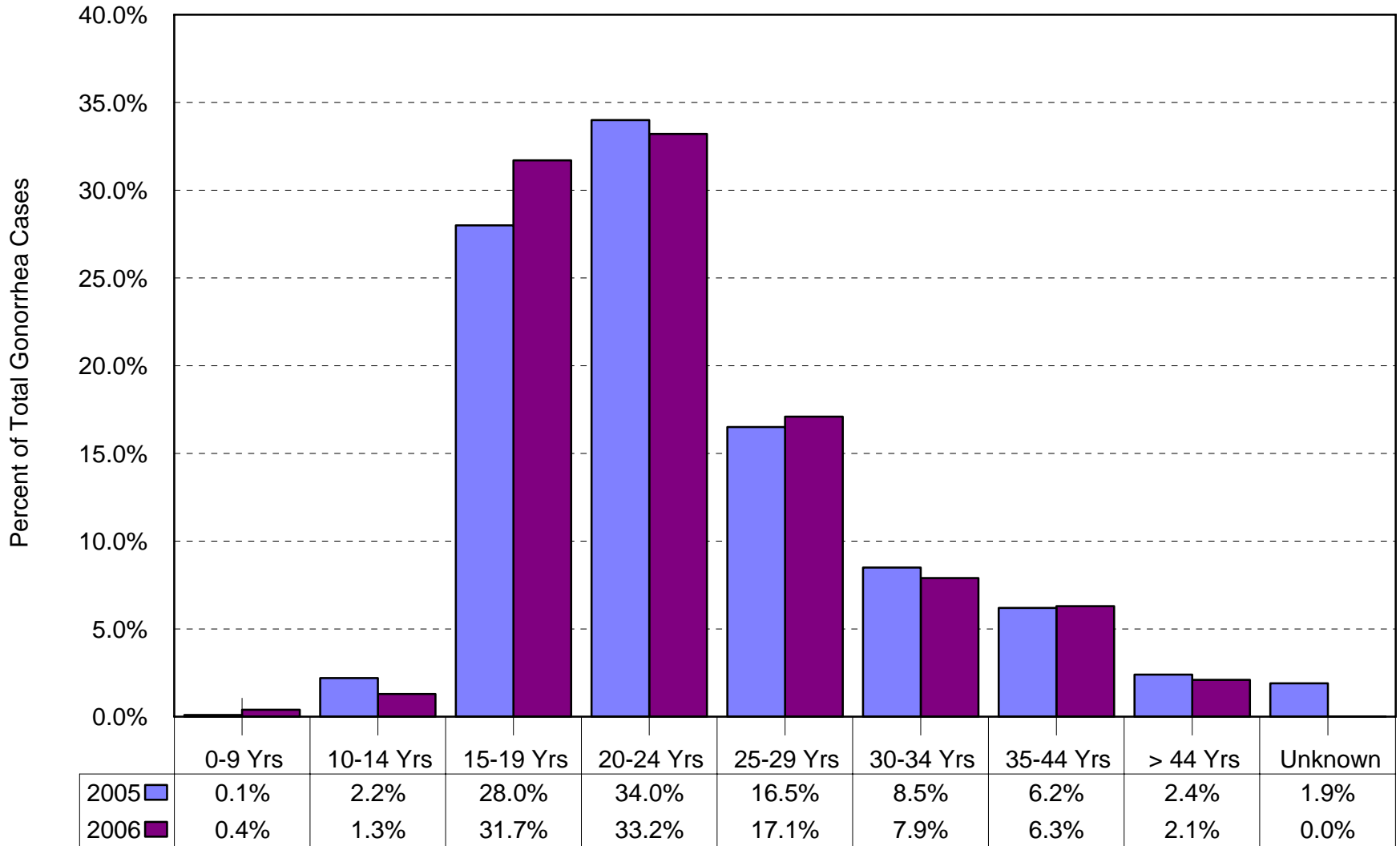


Based on Date of Diagnosis

Douglas County Health Department 05/08/2007



# Percentage of Gonorrhea Cases by Age Group Douglas County, NE 2005-2006

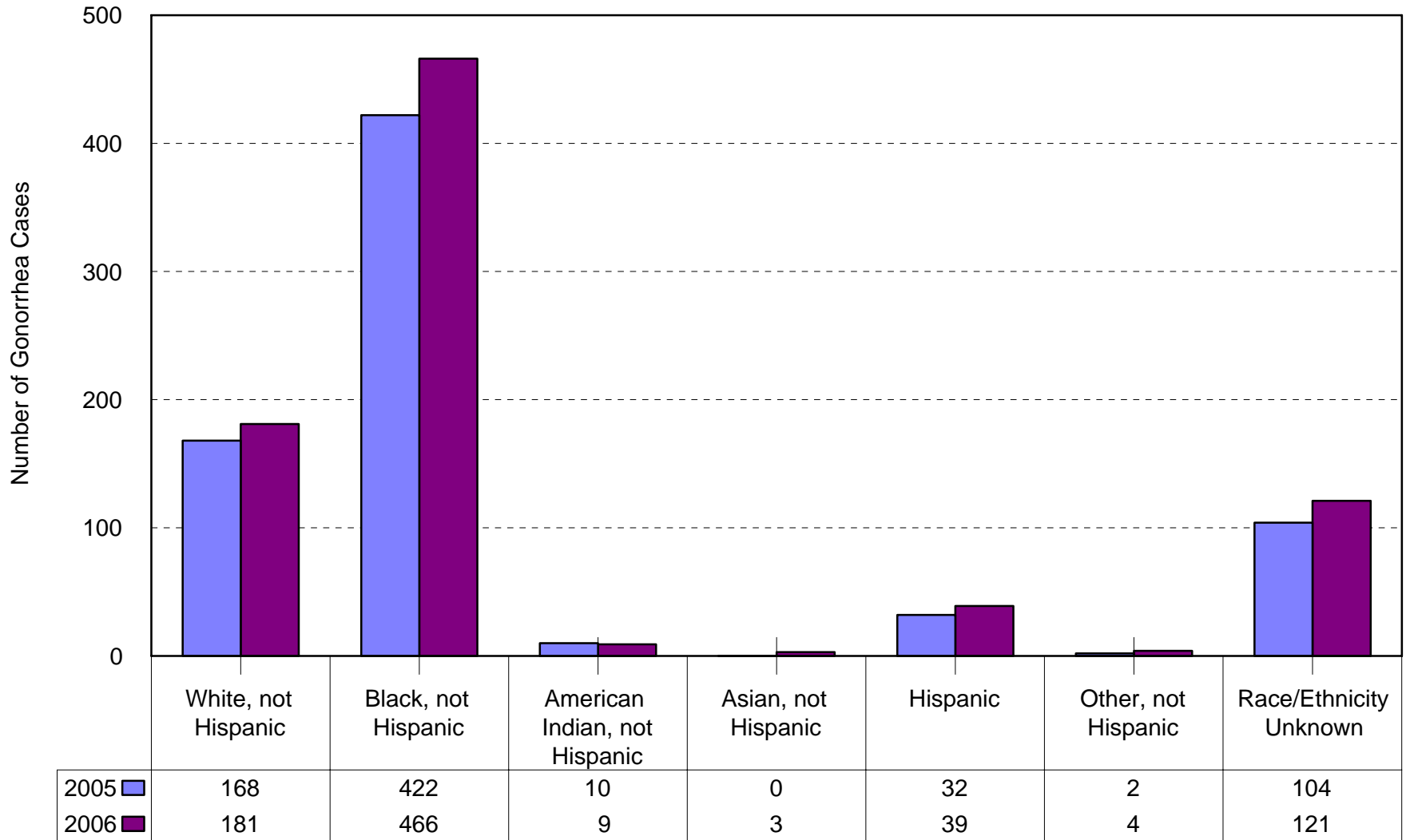


Based on Date of Diagnosis

Douglas County Health Department 05/08/2007



# Number of Gonorrhea Cases by Race/Ethnicity Douglas County, NE 2005-2006



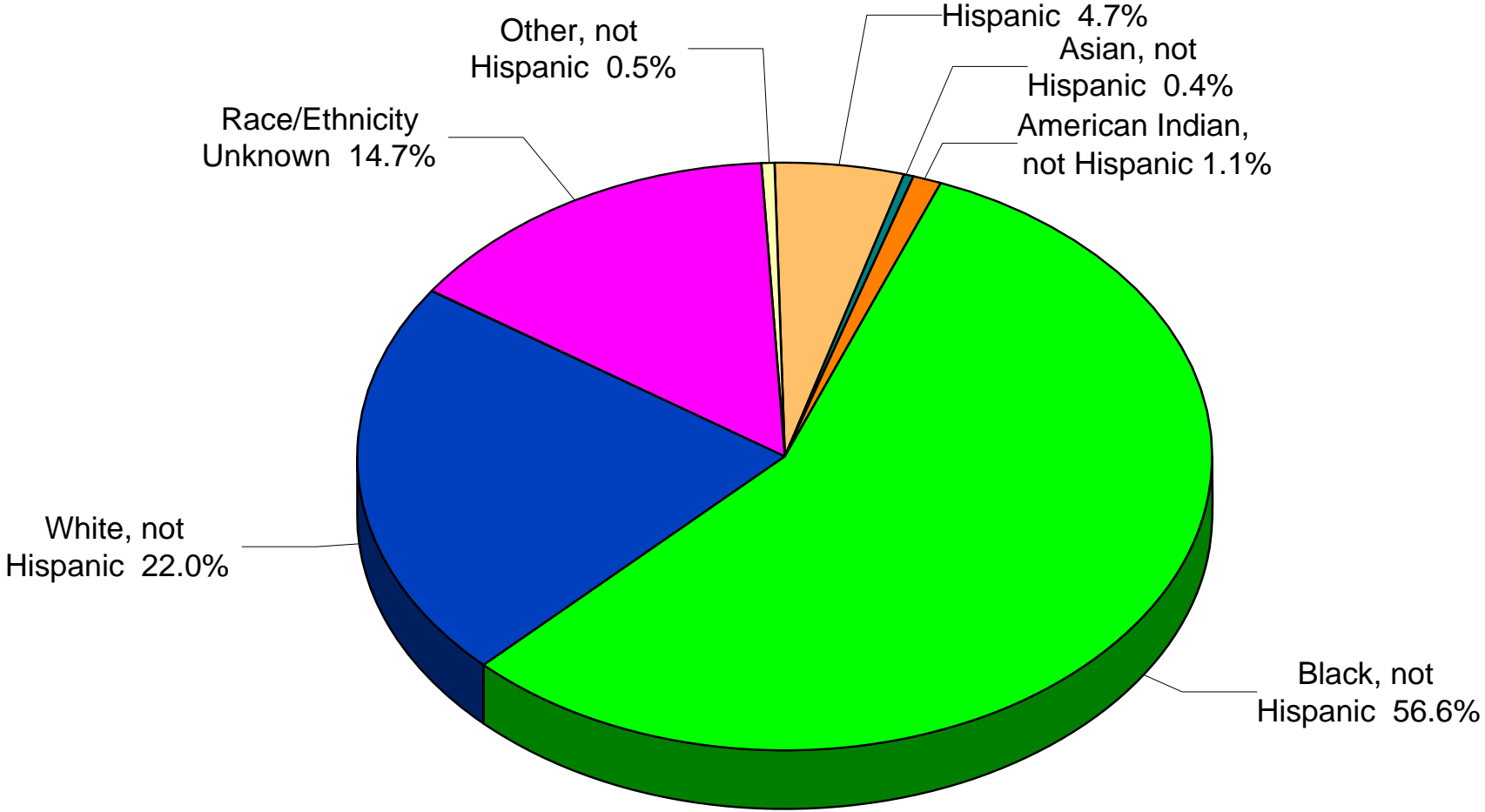
Based on Date of Diagnosis

Douglas County Health Department 05/08/2007



# Gonorrhea Cases By Race/Ethnicity Douglas County, Nebraska 2006

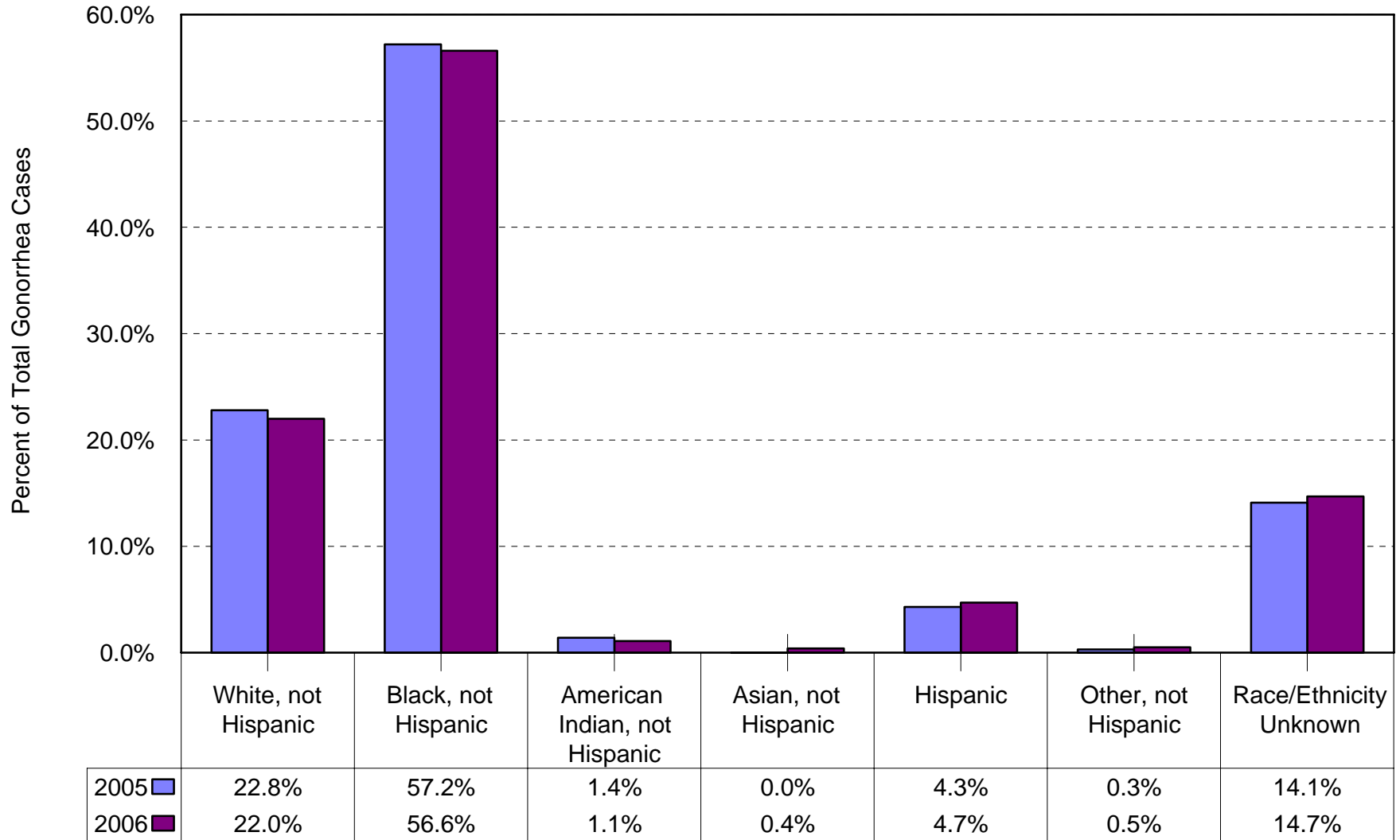
Total Cases = 823



Based on Date of Diagnosis



# Percentage of Gonorrhea Cases by Race/Ethnicity Douglas County, NE 2005-2006



Based on Date of Diagnosis

Douglas County Health Department 05/08/2007



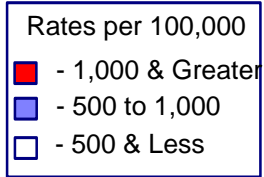
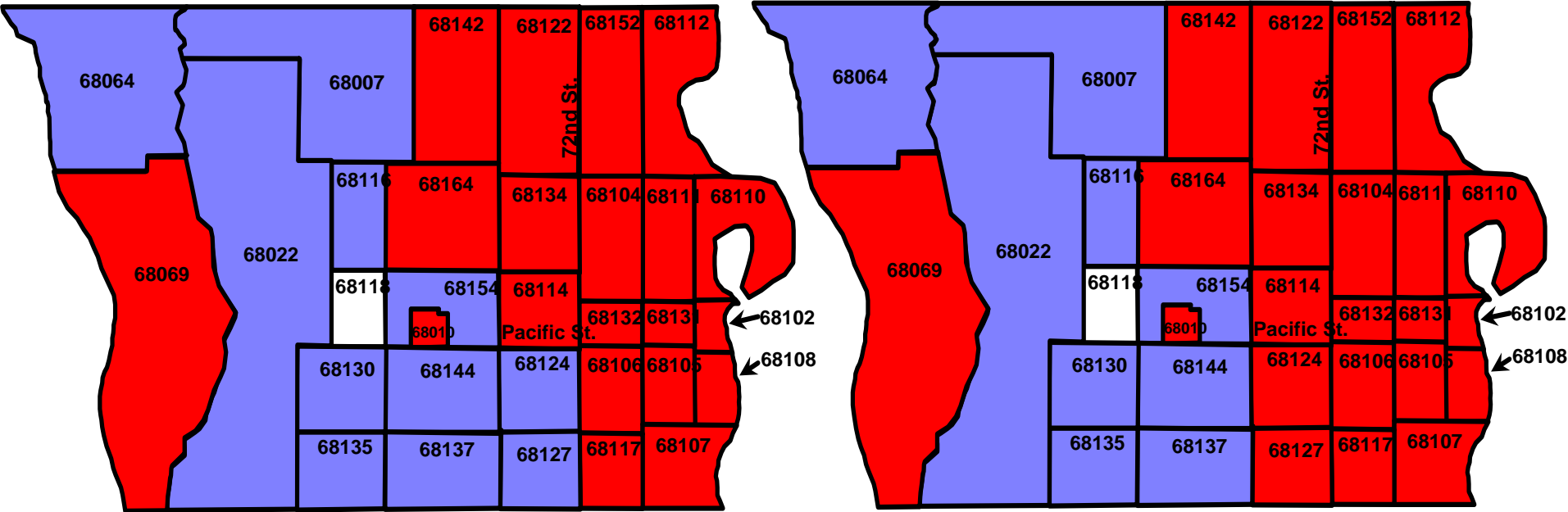
# Chlamydia Rates by Zip Code

## Both Sexes, 15 to 24 Age Group

### Douglas County, Nebraska - Five Year Average

2001 - 2005

2002 - 2006



Based on Date of Report



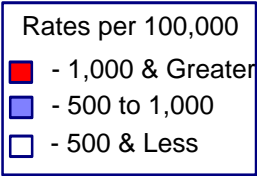
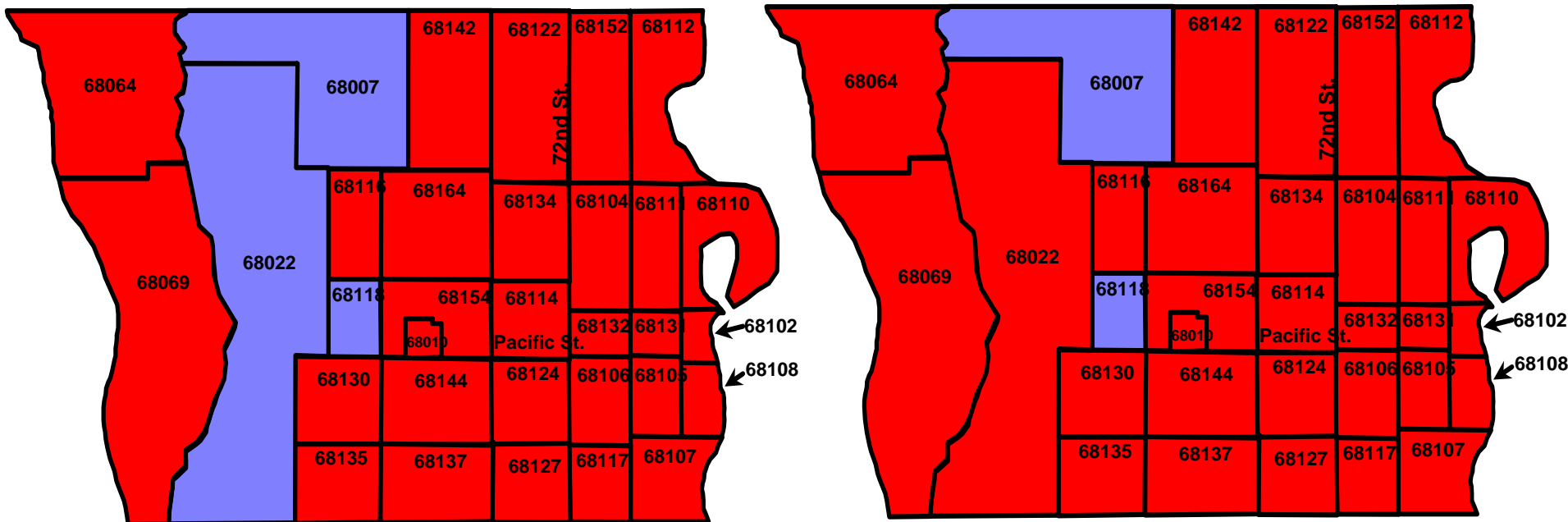
# Chlamydia Rates by Zip Code

## Females, 15 to 24 Age Group

### Douglas County, Nebraska - Five Year Average

2001 - 2005

2002 - 2006



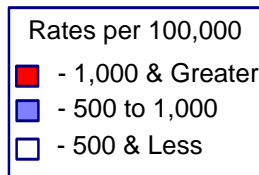
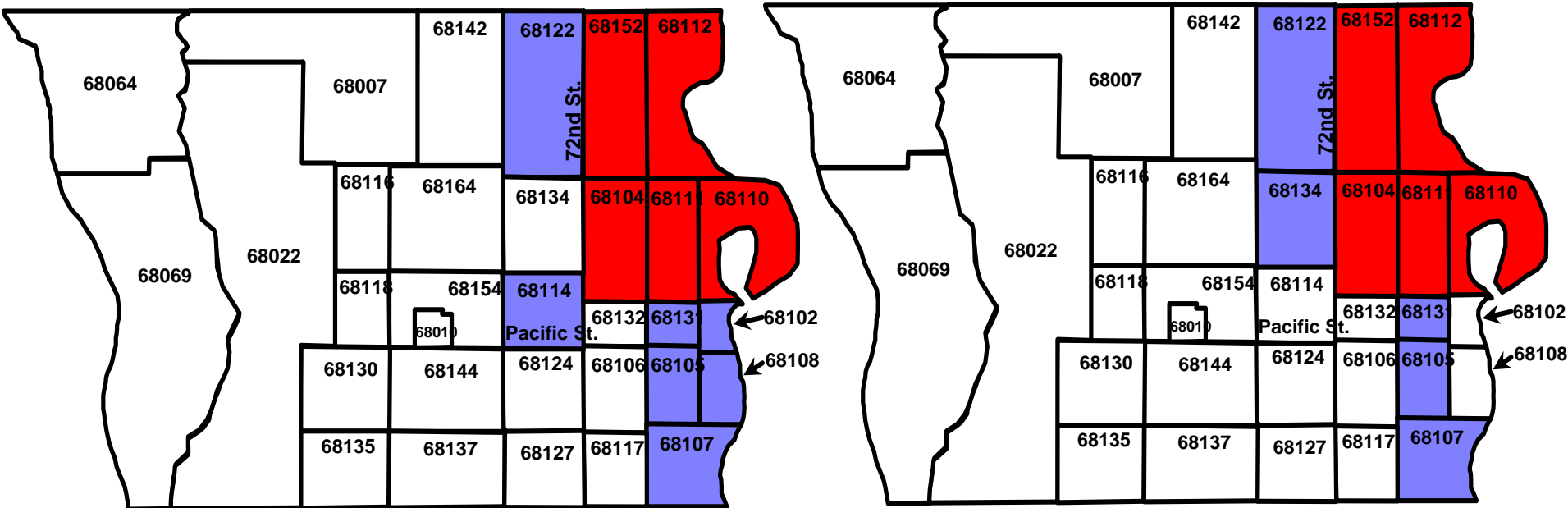
# Gonorrhea Rates by Zip Code

## Both Sexes, 15 to 24 Age Group

### Douglas County, Nebraska - Five Year Average

2001 - 2005

2002 - 2006



Based on Date of Report

Douglas County Health Department 05/08/2007

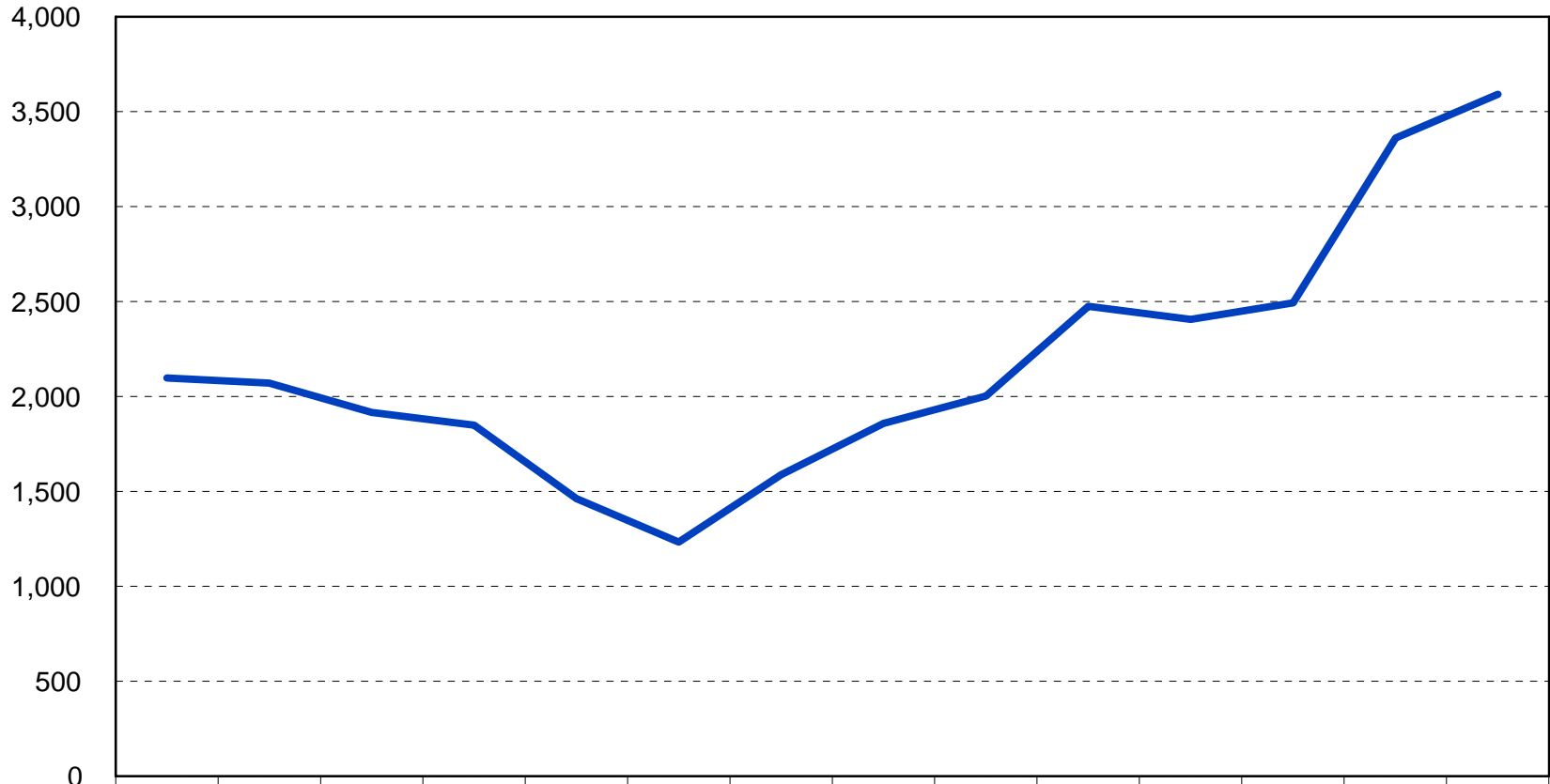


# STD Clinic Visits per Year

## Douglas County Health Department STD Clinic

### 1993-2006

Number of STD Clinic Visits per Year



	1993	1994	1995	1996	1997	1998	1999	2000	2001	2002	2003	2004	2005	2006
Clinic Visits	2,097	2,070	1,916	1,849	1,462	1,233	1,588	1,858	2,002	2,475	2,406	2,493	3,361	3,591

— Clinic Visits

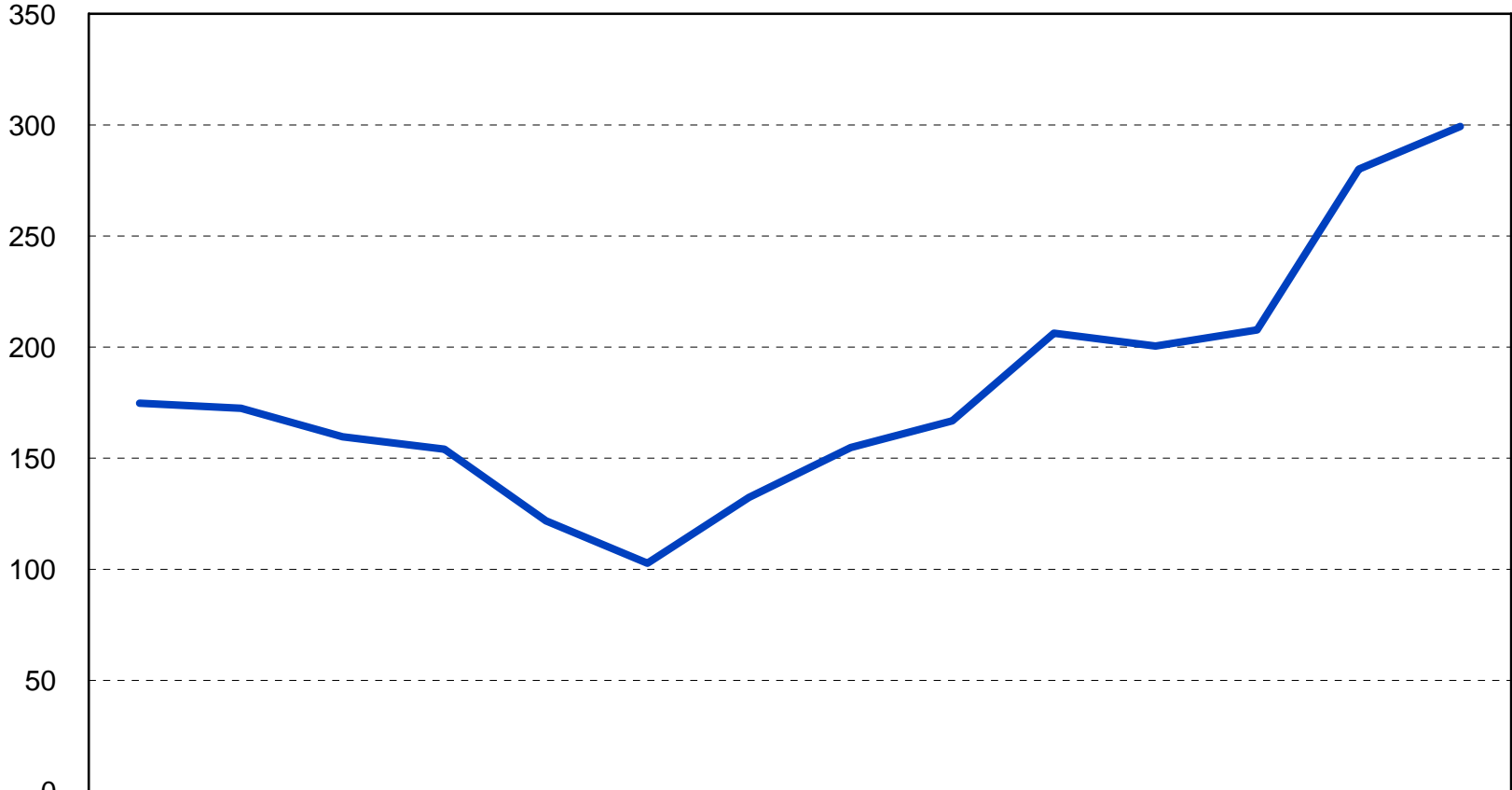


# Average STD Clinic Visits per Month

## Douglas County Health Department STD Clinic

### 1993-2006

Number of STD Clinic Visits per Year



	1993	1994	1995	1996	1997	1998	1999	2000	2001	2002	2003	2004	2005	2006
Clinic Visits	175	173	160	154	122	103	132	155	167	206	201	208	280	299

— Clinic Visits



# Douglas County Health Department

## *STD Control Program*

- Clinical examination, laboratory testing, and appropriate treatment
- Investigation and anonymous partner notification
- Disease surveillance and statistics
- Community Education

# What can be done to change this trend?

- Increase awareness in the community
- Ask for assistance from everybody in the community
- Change priorities in organizations to make a difference
- Support programs that effect behavior change in the community
- Treat epidemic