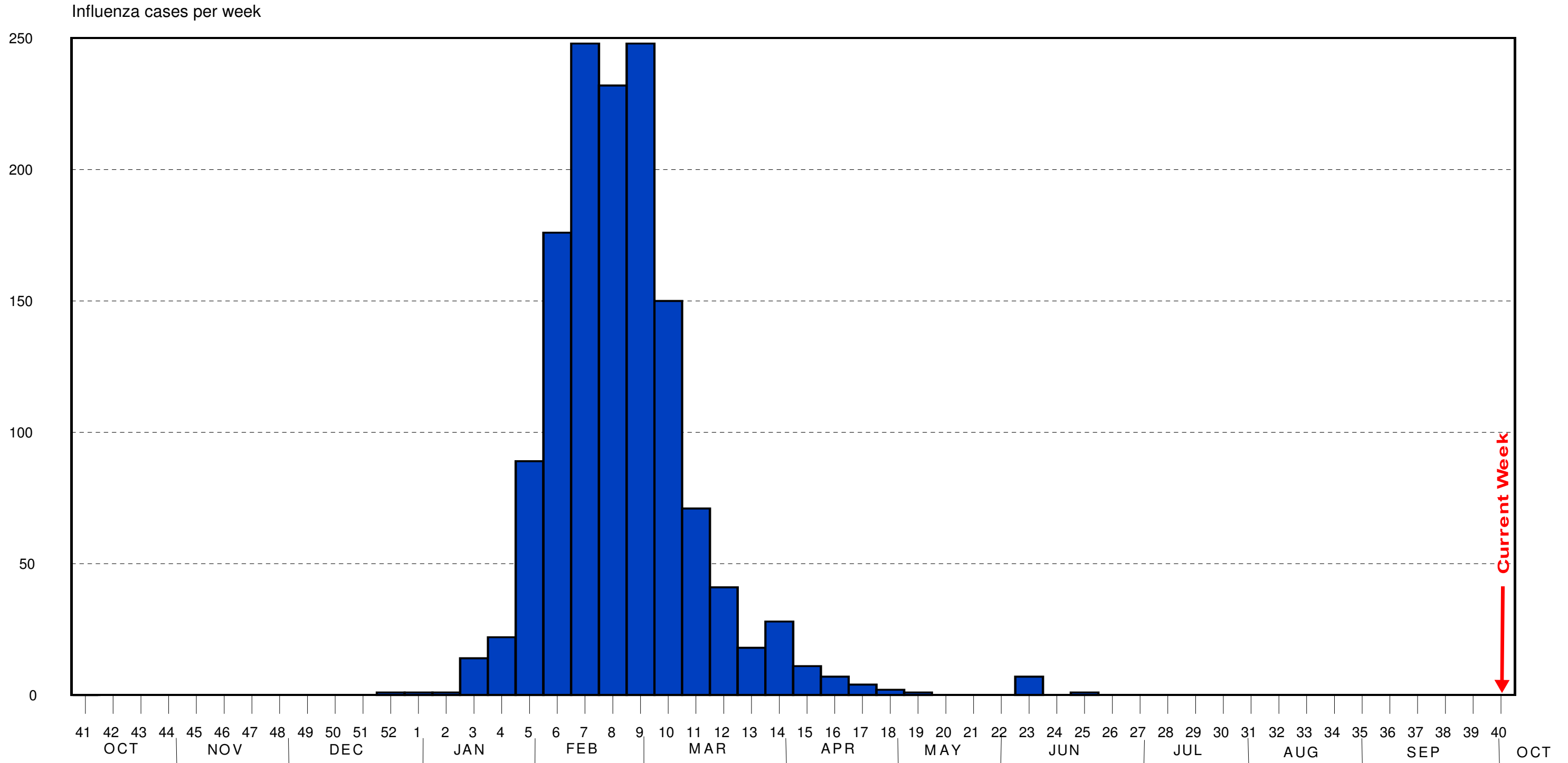


Influenza In Douglas County

Laboratory Confirmed Cases by MMWR Week

2007-2008 Flu Season

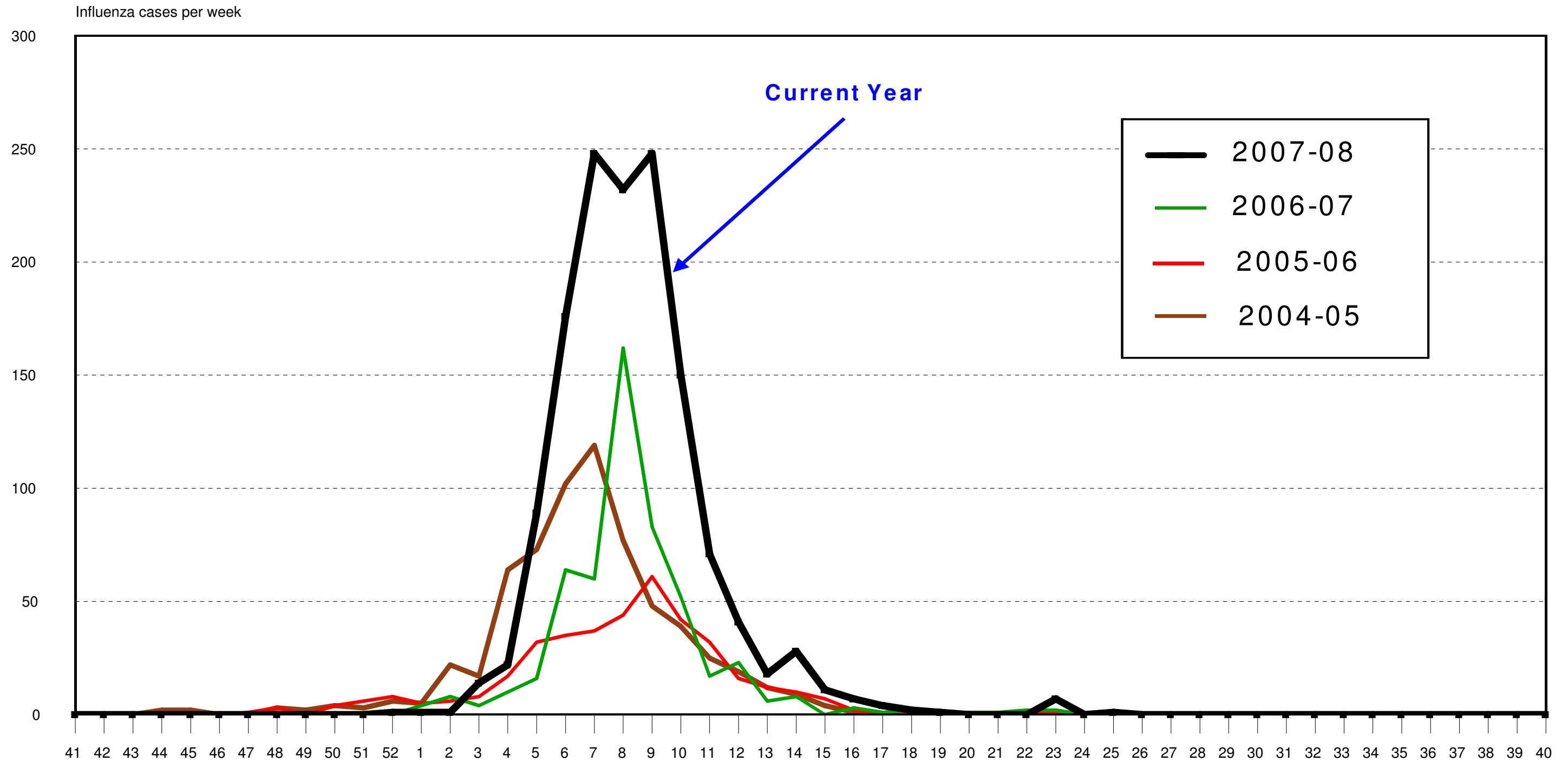
Cases reported through October 3, 2008



Influenza In Douglas County

Laboratory Confirmed Cases by MMWR Week 2004 to 2008

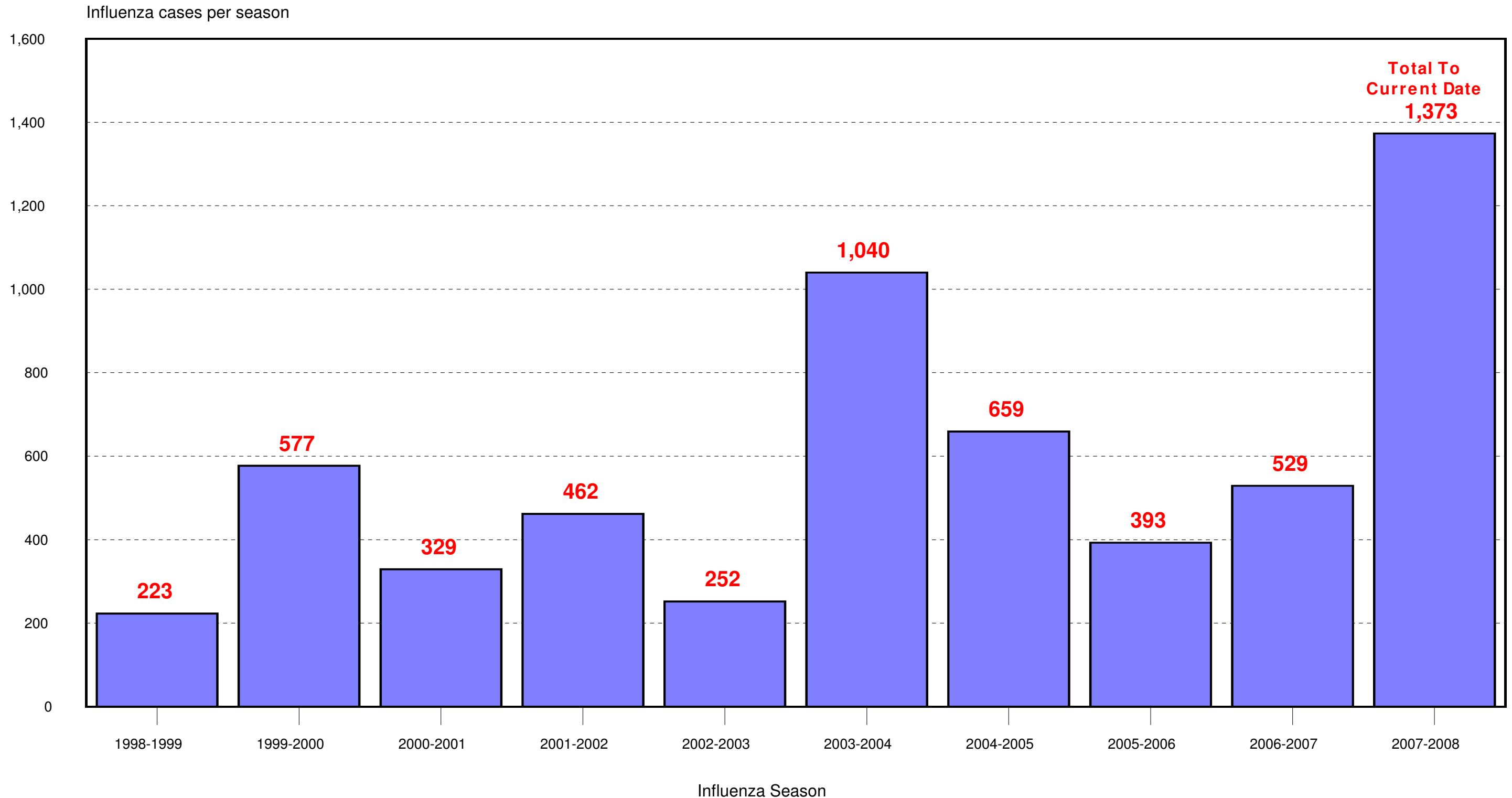
Cases reported through October 3, 2008



Influenza In Douglas County

Laboratory Confirmed Cases by Influenza Season 1998 to 2008

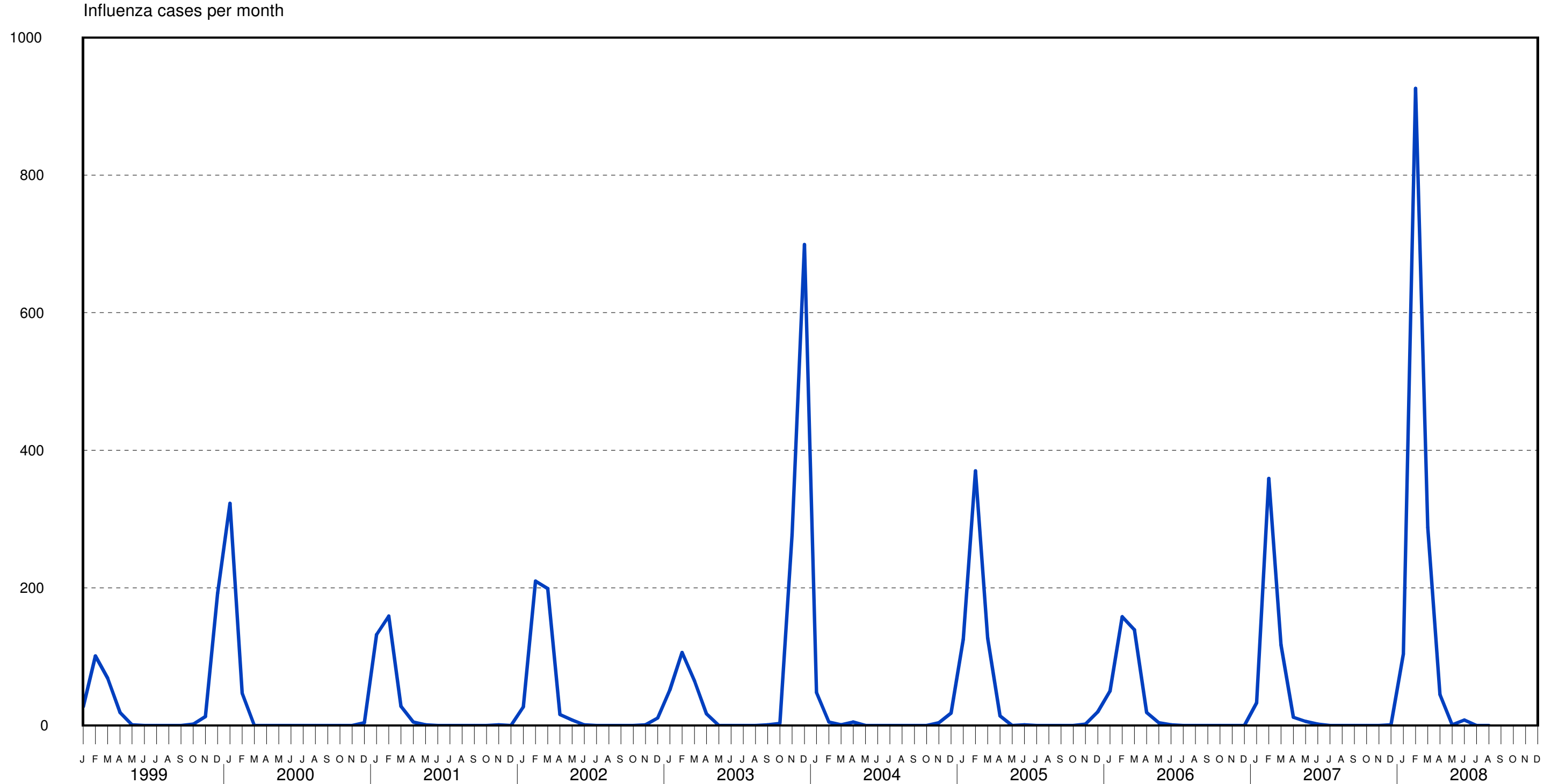
Cases reported through October 3, 2008



Influenza In Douglas County

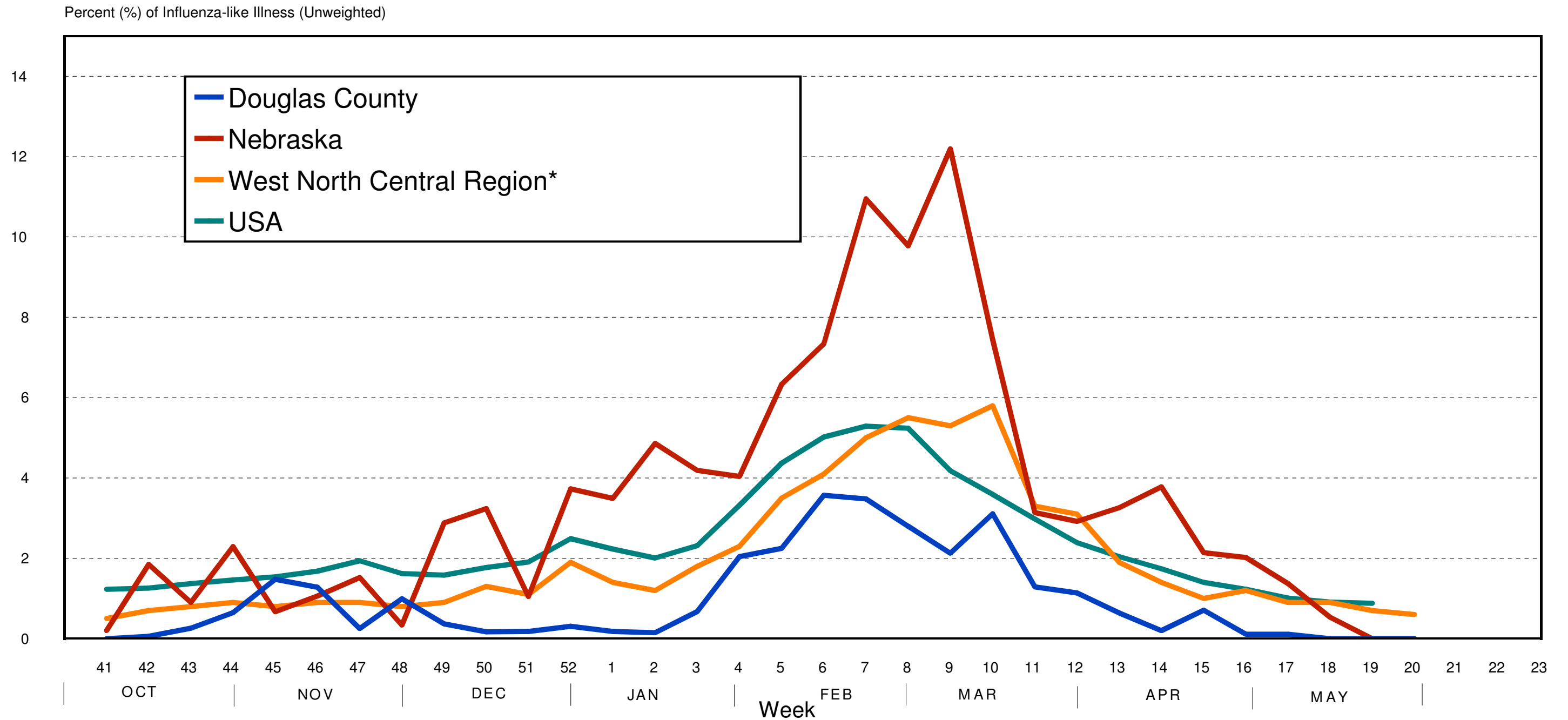
Lab Confirmed Cases by Month, 1999 to 2008

Cases reported through October 3, 2008



Percentage of Visits for Influenza-like Illness

Reported by Sentinel Providers, Douglas County, Nebraska,
West North Central Region* and USA; 2007-2008

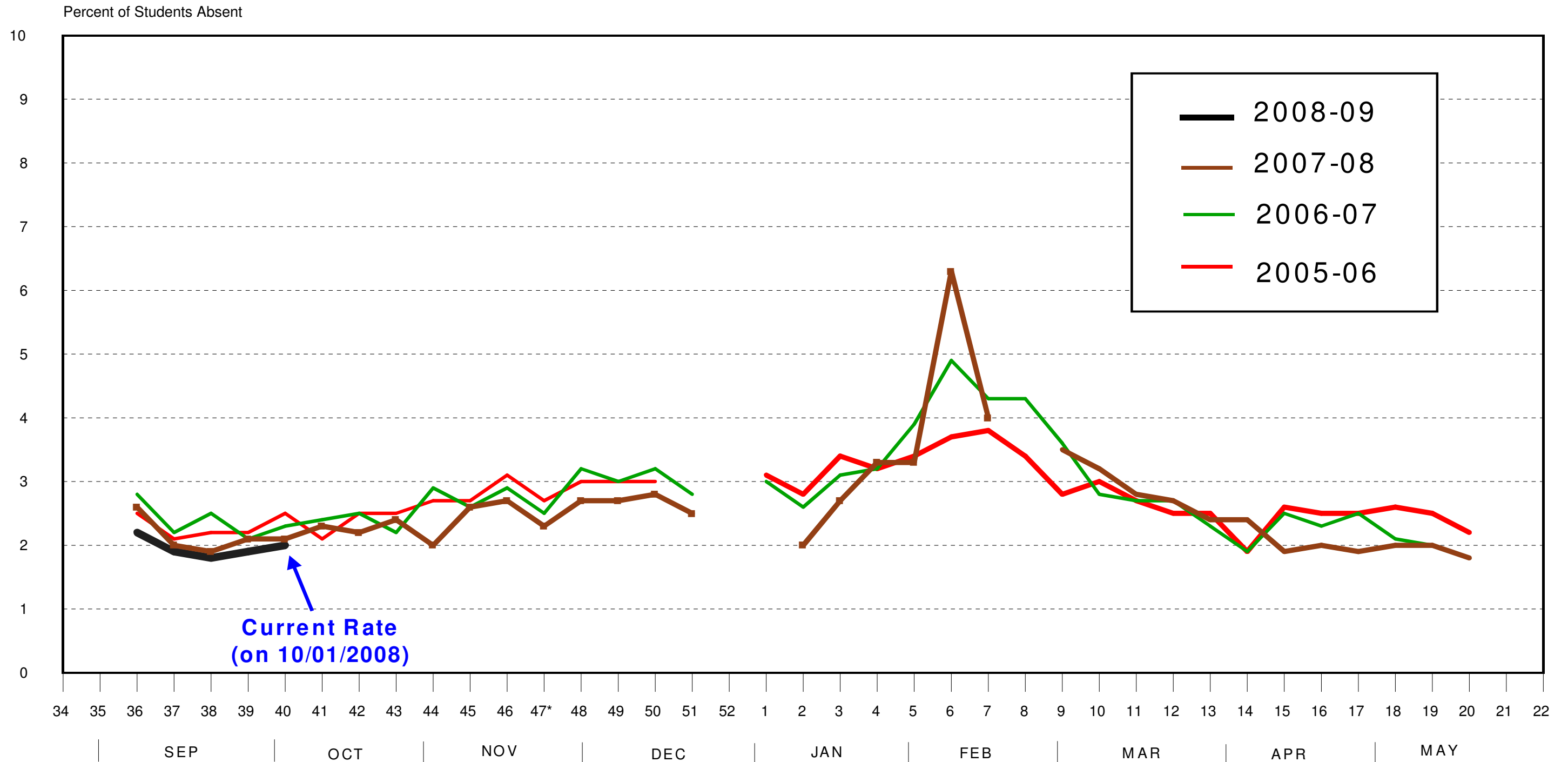


* West North Central Region includes Nebraska, Kansas, Missouri, Iowa, Minnesota, North Dakota, and South Dakota.

School Absenteeism In Douglas County

2005 to 2009 School Years by MMWR Week

Reported through 10/01/2008



Week 47 is during Thanksgiving week and only 1/3 of the county's enrollment was in session that week. The break in the graph lines, around week 51 - week 1, is for Christmas Break when schools are not in session.

School Absenteeism In Douglas County

2007-2008 School Year by MMWR Week and Class Level

Reported through 10/01/2008

